



ΠΑΝΕΠΙΣΤΗΜΙΟ
ΠΑΤΡΩΝ
UNIVERSITY OF PATRAS

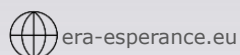


Examples of Integrative Structural Biology *From Chemical Mechanisms to Cellular Function*

A course organized by ERA-ESPERANCE.eu



15-16 May, 2024
Conference Room "Pavlos Cordopatis",
Department of Pharmacy,
University of Patras, GR



ERA-Esperance project has received funding from the European Union's Horizon Europe research and innovation programme (2021-2027), under grant agreement No 101087215



Wednesday 15th May, 2024			
10.00	11.00	Anna Akhmanova <i>Utrecht University, NL</i>	<i>Control of microtubule organization and dynamics</i>
11.00 - 11.30 Coffee break			
11.30	12.30	Christian Zierhut <i>Institute of Cancer Research, London, UK</i>	<i>Chromosomal instability-driven immune responses</i>
12.30 - 13.30 Lunch			
13.30	14.30	Mario van der Stelt <i>Leiden University, NL</i>	<i>Integration of structure-based chemical biology and drug discovery</i>
14.30	16.00	Willem-Jan Keune <i>Netherlands Cancer Institute, NL</i>	<i>Technology transfer and business development for biomedical research</i>
16.00 – 16.30 Coffee Break			
16.30	17.30	Anastassis Perrakis <i>Oncode Institute and the Netherlands Cancer Institute, NL</i>	<i>Navigating the AI era in structural biology</i>
17.30 – 18.00 Coffee Break			
18.00	19.30	<i>EAB meeting + ESPERANCE team</i>	
19.30		Dinner	

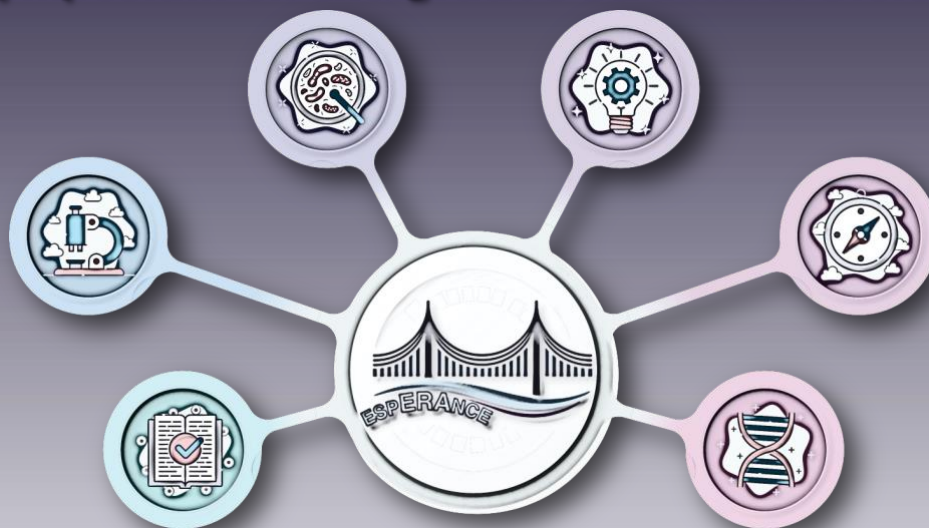
Thursday 16th May, 2024			
9.00	10.00	Savvas Savvides <i>VIB-UGent Center for Inflammation Research, BE</i>	<i>Integrative structure determination of mammalian cell-surface receptor assemblies</i>
10.00	11.00	Marina Mapelli <i>Istituto Europeo di Oncologia, Milano, IT</i>	<i>Organisational and functional principles of macromolecular complexes orchestrating asymmetric cell divisions</i>
11.00 – 11.30 Coffee Break			
11.30	12.30	Konstantinos Tripsianes <i>CEITEC, Brno, CZ</i>	<i>How to study multisite phosphorylation</i>
12.30 - 14.30 Lunch			
14.30	16.30	Meet the speakers (7 groups)	<i>Groups to be decided on site</i>
16.30 – 17.00 Coffee Break			
17.00	19.00	Meet the speakers (7 groups)	<i>Groups to be decided on site (switch groups)</i>
19.00		Dinner	



ΠΑΝΕΠΙΣΤΗΜΙΟ
ΠΑΤΡΩΝ
UNIVERSITY OF PATRAS




Symposium on Integrative Structural Biology



17 May, 2024

Conference Room "Pavlos Cordopatis",
Department of Pharmacy,
University of Patras, GR

 era-esperance.eu

Invited Speakers

Anna Akhmanova (EAB)

Utrecht University, NL

Christian Zierhut

Institute of Cancer Research, London, UK

Mario van der Stelt

Leiden University, NL

Savvas Savvides

VIB-UGent Center for Inflammation Research, BE

Marina Mapelli

Istituto Europeo di Oncologia, Milano, IT

Konstantinos Tripsianes

CEITEC, Brno, CZ

Organized by

Anastassis Perrakis, The ERA-Chair

Oncode Institute, Utrecht University & The Netherlands Cancer Institute, NL

Georgios A. Spyroulias

Dept of Pharmacy, UPAT, GR

Zoi Lygerou

School of Medicine, UPAT, GR

Stavros Taraviras

School of Medicine, UPAT, GR

ERA-Esperance project has received funding from the European Union's Horizon Europe research and innovation programme (2021-2027), under grant agreement No 101087215



Friday 17 th May, 2024			
9.15	9.30	Anastassis Perrakis ERA-Chair	Welcome
9.30 - 11.00 Session 1 - Biological Chemistry – Chair: G. A. Spyroulias			
9.30	10.15	Mario van der Stelt Leiden University, NL	Structure-based design of a novel class of BuB1 inhibitors
10.15	11.00	Konstantinos Tripsianes CEITEC, Brno, CZ	Order-disorder continuum and dynamics in protein function and disease.
11.00 - 11.30 Coffee break			
11.30 - 13.00 Session 2 - Structural Biology– Chair: S. Taraviras			
11.30	12.15	Savvas Savvides VIB-UGent Center for Inflammation Research, BE	Cytokine-receptor assemblies as drivers of fundamental and translational research in inflammation and cancer
12.015	13.00	Marina Mapelli Istituto Europeo di Oncologia, Milano, IT	Dissecting the mechanisms of Wnt3a-dependent self-renewal
13.00 - 14.00 Lunch			
14.00 - 15.45 Session 3 - Cell Biology– Chair: Z. Lygerou			
14.00	14.45	Anna Akhmanova Utrecht University, NL	The Ins and Outs of Microtubule Tip Control by Centrosomal and Ciliary Proteins
14.45	15.30	Christian Zierhut Institute of Cancer Research (ICR), London, UK	Single-cell analysis reveals heterogeneous and rare innate immune activation following DNA damage
15.30	15.45	George Spyroulias UPAT, GR	Closing

Closed Session for ESPERANCE		
16.00	18.30	UPAT's School of Health Sciences Life Sciences Facilities – Discussion with researchers and faculty members
18.30	Dinner	